

Some sizes of housings listed below may not be available.

SN500-600 Series  
SN200-300 Series  
Light duty



SD500-600 Series  
Sd3000 Series



SN500-600 Series  
SN200-300 Series  
Medium duty



SAF500-600 Series



Sn3000 Series  
Sn3100 Series



SAF200-300 Series



SNK500-600 Series



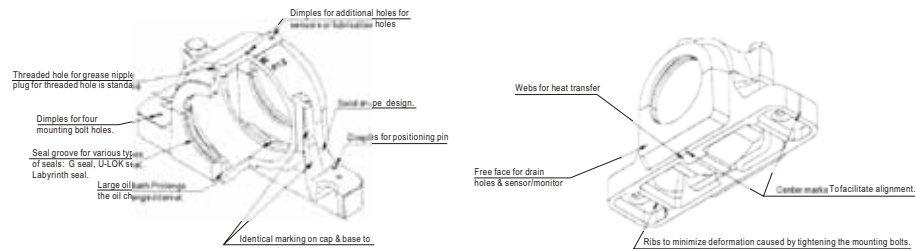
SDAF500-600 Series  
SDAF200-300 Series  
SDAF-2300-K Series



Sd3100 Series



SAF-230K Series



Split pillow blocks mentioned in this catalogue are casted and produced in accordance with the ISO/R113-1994 standard. (B.S. 1642; 1969 standard, JIS B 1551- 1968 standard). The following tables show the standardization of materials and relative machining tolerance covering the housings and its accessories.

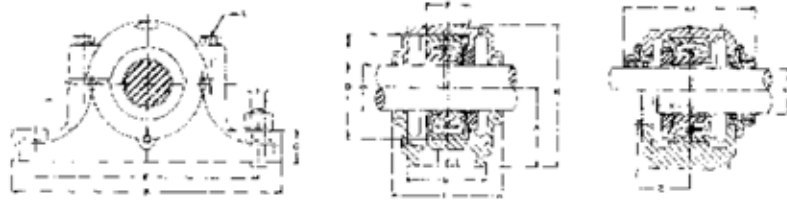
**A: Housing**

MATERIAL	ISO CODE	U.S. CODE	TENSILE STRENGTH kgf/mm <sup>2</sup>	YIELD STRENGTH kgf/mm <sup>2</sup>	ELONGATION
CAST IRON	GRADE 200 (FC 200)	ASTM A48 GRADE 35	20	---	---
DUCTILE IRON (S.G.)	GRADE 450-10 (FCD 450)	ASTM A536 GRAGE 65-45-12	45	30	10%
CAST STEEL	GRADE 230-450 (SC 460)	ASTM A27 GRADE 65-35	46	23	19%

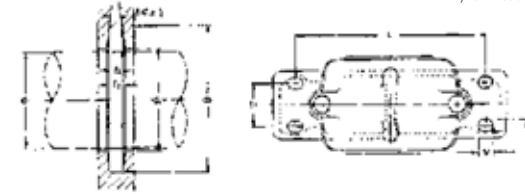
**B. Accessories:**

NAME	PART NO.	MATERIALS
FELT STRIP	FS	60%-80% WOOL, 20% RAYON, DENSITY 0.25g/cm <sup>2</sup>
LOCATING RING	SR	MILD STEEL STRIP AISI 1010/ALUMINUM
HEXAGON BOLT	M	MILD STEEL AISI 1010
ZF SEAL	ZF	NBR (Nitrile -Butadiene Rubber)
SC SEAL	OSM	NBR (Nitrile -Butadiene Rubber)
U-TYPE SEAL	U-500/U-600	NBR (Nitrile -Butadiene Rubber)
LABYRINTH SEAL	TS/LER	CAST IRON/ALUMINUM/STEEL
TACONITE CARRIER	TAC/TER/TACK	CAST IRON
END COVER	500NA/600NA	NBR (Nitrile -Butadiene Rubber)& THIN STEEL PLATE
END PLATE	P	THIN STEEL PLATE
END COVER	TSA	CAST IRON
END PLUG	EPR	NBR (Nitrile -Butadiene Rubber)& THIN STEEL PLATE
V-RING SEAL	TSNA-A	NBR (Nitrile -Butadiene Rubber)& THIN STEEL PLATE

Declaration: Weights listed in this catalog are subject to change without notice.



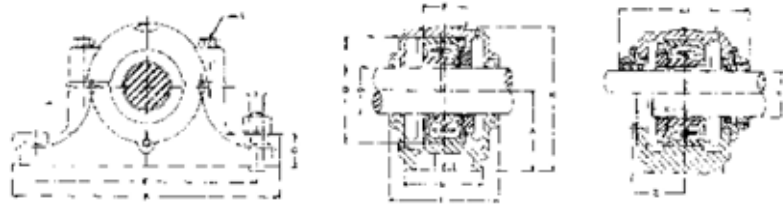
HOUSING NO.	NORMAL DIMENSIONS (mm)															
	SHAFT DIA. D1		D H8	B	b	G	F H13	A h13	L	H	E	E1	L1	X	Z	D2H12 mm
	mm	in														
SN 505	20	3/4	52	165	46	22	25	40	67	75	130	25	-	22	-	21.5
SN 506	25	1	62	185	52	22	30	50	77	90	150	25	-	22	-	26.5
SN 507	30	1 1/8	72	185	52	22	33	50	82	95	150	25	-	24	-	31.5
SN 508	35	1 1/4	80	205	60	25	33	60	85	110	170	30	-	26	-	36.5
SN SSN 509	40	1 1/2	85	205	60	25	31	60	85	112	170	30	-	28	-	41.5
SN SSN 510	45	1 3/4	90	205	60	25	33	60	90	115	170	30	-	28	-	46.5
SN SSN 511	50	2	100	255	70	28	33	70	95	130	210	35	160	30	54	51.5
SN SSN 512	55	2 1/8	110	255	70	30	38	70	105	135	210	35	172	32	62	56.5
SN SSN 513	60	2 1/4	120	275	80	30	43	80	110	150	230	40	172	36	62	62
SN SSN 515	65	2 1/2	130	280	80	30	41	80	115	155	230	40	182	38	68	67
SN SSN 516	70	2 3/4	140	315	90	32	43	95	120	175	260	50	184	40	68	72
SN SSN 517	75	3	150	320	90	32	46	95	125	185	260	50	184	42	70	77
SN SSN 518	80	3 1/4	160	345	100	35	62.4	100	145	195	290	50	204	50	81	82
SN SSN 519	85	-	170	345	100	35	53	112	140	210	290	50	-	-	-	87
SN SSN 520	90	3 1/2	180	380	110	40	70.3	112	160	218	320	60	224	54	90	92
SN SSN 522	100	4	200	410	120	45	80	125	175	240	350	70	232	60	92	102
SN SSN 524	110	4 1/4	215	410	120	45	86	140	185	270	350	70	248	64	95	113
SN SSN 526	115	4 1/2	230	445	130	50	90	150	190	290	380	70	268	64	100	118
SN SSN 528	125	5	250	500	150	50	98	150	205	305	420	80	286	70	108	128
SN SSN 530	135	5 1/4	270	530	160	60	106	160	220	325	450	90	304	76	113	138
SN SSN 532	140	5 1/2	290	550	160	60	114	170	235	345	470	90	320	80	122	143



NOTES:  
Foot of standard housing SSN type is solid without mounting holes or can be precast as 2-bolt(with prefix T ) or 4-bolt mounting holes (with prefix F).

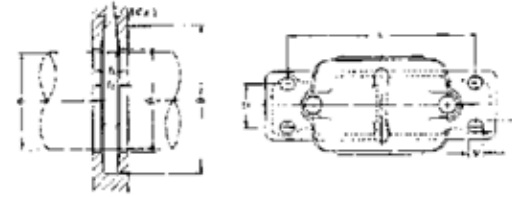
d3 H12	t	f1 H13	f2	u	v	S		WEIGHT kg		BEARING NO.		ADAPTER SLEEVES		LOCATING RING	
						2 bolts	4 bolts	SN5	SSN5	SELF-ALIGN BALL	SPHERICAL ROLLER	METRIC	INCH	NUMBER	QTY
31	M8	3	4.2	15	20	M12	M8	1.5	2.3	1205K 2205K	22205K	H205 H305	HE205 HE305	52x5 52x7	2 1
38	M8	4	5.4	15	20	M12	M10	1.74	2.8	1206K 2206K	22206K	H206 H306	HE206 HE306	62x7 62x10	2 1
43	M10	4	5.4	15	20	M12	M10	1.9	3.2	1207K 2207K	22207K	H207 H307	HE207 HE307	72x8 72x10	2 1
48	M10	4	5.4	15	20	M12	M10	2.63	3.2	1208K 2208K	22208K	H208 H308	HE208 HE308	80x7.5 80x10	2 1
53	M10	4	5.4	15	20	M12	M10	2.64	3.7	1209K 2209K	22209K	H209 H309	HE209 HE309	85x6 85x8	2 1
58	M10	4	5.4	15	20	M12	M10	2.8	3.8	1210K 2210K	22210K	H210 H310	HE210 HE310	90x6.5 90x10	2 1
67	M12	5	6.9	18	23	M16	M12	4.32	6.2	1211K 2211K	22211K	H211 H311	HE211 HE311	100x6 100x8	2 1
72	M12	5	6.9	18	23	M16	M12	4.99	6.5	1212K 2212K	22212K	H212 H312	HE212 HE312	110x8 110x10	2 1
77	M12	5	6.8	18	23	M16	M12	5.64	8.3	1213K 2213K	22213K	H213 H313	HE213 HE313	120x10 120x12	2 1
82	M12	5	6.8	18	23	M16	M12	6.19	9.0	1215K 2215K	22215K	H215 H315	HE215 HE315	130x8 130x10	2 1
89	M16	6	8.1	22	27	M20	M12	8.17	12.1	1216K 2216K	22216K	H216 H316	HE216 HE316	140x8.5 140x10	2 1
94	M16	6	8.1	22	27	M20	M12	9.37	12.2	1217K 2217K	22217K	H217 H317	HE217 HE317	150x9 150x10	2 1
99	M16	6	8.1	22	27	M20	M16	11.5	15.2	1218K 2218K 23218K	22218K 23218K	H218 H318 H2318	HE218 HE318 HE2318	160x16.2 160x11.2 160x10	2 2 1
104	M16	6	8.1	22	28	M20	M16	13.5	17.7	1219K 22219K	22219K	H219 H319	HE219 HE319	170x10.5 170x10	2 1
111	M20	7	9.3	26	32	M24	M16	16.3	20.5	22220K 23220K	22220K 23220K	H320 H2320	HE320 HE2320	180x12.1 180x10	2 1
125	M20	8	10.8	26	32	M24	M16	25.1	29.2	2222K 2322K	2222K 2322K	H322 H2322	HE322 HE2322	200x13.5 200x10	2 1
135	M20	8	10.7	26	34	M24	M16	27.2	33	-	22224K 23224K	H3124 H2324	HE3124 HE2324	215x14 215x10	2 1
140	M24	8	10.7	28	35	M24	M20	35.2	40.9	-	22226K 23226K	H3126 H2326	HE3126 HE2326	230x13 230x10	2 1
154	M24	9	12.2	34	44	M30	M24	43.7	48.6	-	22228K 23228K	H3128 H2328	HE3128 HE2328	250x15 250x10	2 1
164	M24	9	12.2	34	42	M30	M24	45.3	56.2	-	22230K 23230K	H3130 H2330	HE3130 HE2330	270x16.5 270x10	2 1
173	M24	10	13.7	32	44	M30	M24	50.75	68.5	-	22232K 23232K	H3132 H2332	HE3132 HE2332	290x17 290x10	2 1

SN -SSN 600 Series



HOUSING NO.	NORMAL DIMENSIONS (mm)															
	SHAFT DIA. D1		D Hg	B	b	G	F H13	A h13	L	H	E	E1	L1	X	d2H12 METRIC	d3 H12
	mm	in														
SN 605	20	3/4	62	185	52	22	34	50	80	90	150	25	-	27	21.5	31
SN 606	25	1	72	185	52	22	37	50	82	95	150	25	-	27	26.5	38
SN 607	30	1 1/8	80	205	60	25	41	60	90	110	170	30	-	32	31.5	43
SN 608	35	1 1/4	90	205	60	25	43	60	95	115	170	30	-	34	36.5	48
SN SSN 609	40	1 1/2	100	255	70	28	46	70	105	130	210	35	-	36	41.5	53
SN SSN 610	45	1 3/4	110	255	70	30	50	70	115	135	210	35	-	39	46.5	58
SN SSN 611	50	2	120	275	80	30	53	80	120	150	230	40	185	40	51.5	67
SN SSN 612	55	2 1/8	130	280	80	30	56	80	125	155	230	40	185	44	56.5	72
SN SSN 613	60	2 1/4	140	315	90	32	58	95	130	175	260	50	200	46	62	77
SN SSN 615	65	2 1/2	160	345	100	35	65	100	140	195	290	50	210	51	67	82
SN SSN 616	70	2 3/4	170	345	100	35	68	112	145	212	290	50	210	52	72	89
SN SSN 617	75	3	180	380	110	40	70	112	155	218	320	60	220	56	77	94
SN SSN 618	80	3 1/4	190	400	110	33	74	112	160	230	335	60	225	58	82	99
SN SSN 619	85		200	420	120	36	77	125	170	245	350	70	235	60	87	104
SN SSN 620	90	3 1/2	215	420	120	38	83	140	175	280	350	70	240	64	92	111
SN SSN 622	100	4	240	460	130	40	90	150	190	300	390	70	258	69	102	125
SN SSN 624	110	4 1/4	260	540	160	50	96	160	205	325	450	90	280	73	113	135
SN SSN 626	115	4 1/2	280	560	160	50	103	170	215	350	470	90	300	77	118	140
SN SSN 628	125	5	300	630	170	55	112	180	235	375	520	90	320	83	128	154
SN SSN 630	135	5 1/4	320	680	180	55	118	190	245	395	560	90	340	88	138	164
SN SSN 632	140	5 1/2	340	710	190	60	124	200	255	415	580	100	350	93	143	173

SN -SSN 600 Series

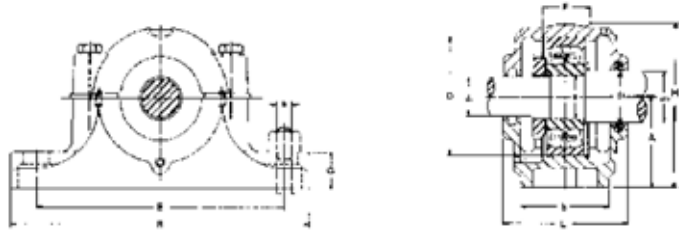


NOTES:

Foot of standard housing SSN type is solid without mounting holes or can be precast as 2-bolt(with prefix T ) or 4-bolt mounting holes (with prefix F).

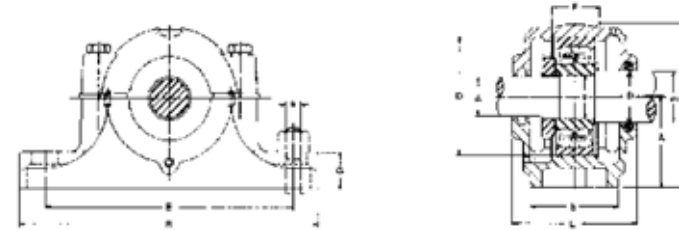
T	f1 H13	f2	u	v	S		WEIGHT kg		BEARING NO.		ADAPTER SLEEVE		LOCATING RING	
					2 bolts	4 bolts	SN6	SSN6	SELF-ALIGN BALL	SPHERICAL ROLLER	METRIC	INCH	NUMBER	QTY
					M12	M10	M12	M10						
M8	3	4.2	16	20	M12	M10	2.11	-	1305K 2305K	-	H305 H2305	HE305 HE2305	62x8.5 62x10	2 1
M10	4	5.4	16	20	M12	M10	2.09	-	1306K 2306K	-	H306 H2306	HE306 HE2306	72x9 72x10	2 1
M10	4	5.4	16	20	M12	M10	3.4	4.1	1307K 2307K	-	H307 H2307	HE307 HE2307	80x10 80x10	2 1
M10	4	5.4	15	24	M12	M10	3.6	4.7	1308K 2308K	21308K 2308K	H308 H2308	HE308 HE2308	90x10 90x10	2 1
M12	4	5.4	19	25	M16	M12	5.3	6.8	1309K 2309K	21309K 2309K	H309 H2309	HE309 HE2309	100x10.5 100x10	2 1
M12	4	5.4	18	23	M16	M12	5.5	6.8	1310K 2310K	21310K 2310K	H310 H2310	HE310 HE2310	110x11.5 110x10	2 1
M12	5	6.9	20	28	M16	M12	6.9	9.0	1311K 2311K	21311K 2311K	H311 H2311	HE311 HE2311	120x12 120x10	2 1
M12	5	6.9	20	28	M16	M12	8.8	10.5	1312K 2312K	21312K 2312K	H312 H2312	HE312 HE2312	130x12.5 130x10	2 1
M16	5	6.8	22	30	M20	M12	9.8	12.4	1313K 2313K	21313K 2313K	H313 H2313	HE313 HE2313	140x12.5 140x10	2 1
M16	5	6.8	23	28	M20	M16	13.0	16.4	1315K 2315K	21315K 2315K	H315 H2315	HE315 HE2315	160x14 160x10	2 1
M16	6	8.1	23	30	M20	M16	15.5	19.7	1316K 2316K	21316K 2316K	H316 H2316	HE316 HE2316	170x14.5 170x10	2 1
M20	6	8.1	26	35	M24	M16	16.3	20.7	1317K 2317K	21317K 2317K	H317 H2317	HE317 HE2317	180x14.5 180x10	2 1
M20	6	8.1	27	38	M24	M16	20.0	24	1318K 2318K	-	H318 H2318	HE318 HE2318	190x15.5 190x10	2 1
M20	6	8.1	28	36	M24	M16	28.0	29.7	1319K 2319K	-	H319 H2319	HE319 HE2319	200x16 200x10	2 1
M20	7	9.3	27	33	M24	M16	30.5	37.1	1320K 2320K	-	H320 H2320	HE320 HE2320	215x18 215x10	2 1
M20	8	10.0	28	32	M24	M16	42	49.2	1322K 2322K	-	H322 H2322	HE322 HE2322	240x20 240x10	2 1
M24	8	10.7	34	42	M30	M20	59	72	-	22324K	H2324	HE2324	280x10	1
M24	8	10.7	34	42	M30	M20	61.5	80.9	-	22326K	H2326	HE2326	280x10	1
M30	9	12.2	34	46	M30	M20	88	105	-	22328K	H2328	HE2328	300x10	1
M30	9	12.2	38	44	M30	M20	89	115	-	22330K	H2330	HE2330	320x10	1
M30	10	13.7	40	52	M36	M24	127	145	-	22332K	H2332	HE2332	340x10	1

SN - SSNZ 200 Series



HOUSING NO.	SHAFT DIA.			NORMAL DIMENSIONS (mm)										BOLTS	SELF-ALIGN BALL	SPHERICAL ROLLER	LOCK NUT	LOCK WASHER	ZF SEAL		LOCATING RING	
	d	d1	d2	D H8	B	b	G	F H13	A h13	L	H	E	d1						d2	NUMBER	QTY	
SNZ 205	25	20	30	52	165	46	22	25	40	67	75	130	M12	1205 2205	-	AN05	AW05	ZF5	ZF7	52x5 52x7	2 1	
SNZ 206	30	25	35	62	185	52	22	30	50	77	90	150	M12	1206 2206	-	AN06	AW06	ZF6	ZF8	62x7 62x10	2 1	
SNZ 207	35	30	45	72	185	52	22	33	50	82	95	150	M12	1207 2207	-	AN07	AW07	ZF7	ZF10	72x8 72x10	2 1	
SNZ 208	40	35	50	80	205	60	25	33	60	85	110	170	M12	1208 2208	-	AN08	AW08	ZF8	ZF11	80x7.5 80x10	2 1	
SNZ SSNZ 209	45	40	55	85	205	60	25	31	60	85	112	170	M12	1209 2209	22209	AN09	AW09	ZF9	ZF12	85x6 85x8	2 1	
SNZ SSNZ 210	50	45	60	90	205	60	25	33	60	90	115	170	M12	1210 2210	-	AN10	AW10	ZF10	ZF13	90x6.5 90x10	2 1	
SNZ SSNZ 211	55	50	65	100	255	70	28	33	70	95	130	210	M16	1211 2211	-	AN11	AW11	ZF11	ZF15	100x6 100x8	2 1	
SNZ SSNZ 212	60	55	70	110	255	70	30	38	70	105	135	210	M16	1212 2212	-	AN12	AW12	ZF12	ZF16	110x8 110x10	2 1	
SNZ SSNZ 213	65	60	75	120	275	80	30	43	80	110	150	230	M16	1213 2213	-	AN13	AW13	ZF13	ZF17	120x10 120x12	2 1	
SNZ SSNZ 214	70	60	80	125	275	80	30	44	80	115	155	230	M16	1214 2214	-	AN14	AW14	ZF13	ZF18	125x10 125x13	2 1	
SNZ SSNZ 215	75	65	85	130	280	80	30	41	80	115	155	230	M16	1215 2215	-	AN15	AW15	ZF15	ZF19	130x8 130x10	2 1	
SNZ SSNZ 216	80	70	90	140	315	90	32	43	95	120	175	260	M20	1216 2216	-	AN16	AW16	ZF16	ZF20	140x8.5 140x10	2 1	
SNZ SSNZ 217	85	75	95	150	320	90	32	46	95	125	185	260	M20	1217 2217	-	AN17	AW17	ZF17	ZF21	150x9 150x10	2 1	
SNZ SSNZ 218	90	80	100	160	345	100	35	62.4	100	145	195	290	M20	1218 2218	22218 23218	AN18	AW18	ZF18	ZF22	160x16.2 160x11.2 160x10	2 2 1	
SNZ SSNZ 219	95	85	110	170	345	100	35	53	112	140	210	290	M20	1219 2219	-	AN19	AW19	ZF19	ZF24	170x10.5 170x10	2 1	
SNZ SSNZ 220	100	90	115	180	380	110	40	70.3	112	160	218	320	M24	2220 -	22220 23220	AN20	AW20	ZF20	ZF26	180x12.1 180x10	2 1	
SNZ SSNZ 222	110	100	125	200	410	120	45	80	125	175	240	350	M24	2222 -	22222 23222	AN22	AW22	ZF22	ZF28	200x13.5 200x10	2 1	
SNZ SSNZ 224	120	110	135	215	410	120	45	86	140	185	270	350	M24	2224 -	22224 23224	AN24	AW24	ZF24	ZF30	215x14 215x10	2 1	
SNZ SSNZ 226	130	115	145	230	445	130	50	90	150	190	290	380	M24	2226 -	22226 23226	AN26	AW26	ZF26	ZF33	230x13 230x10	2 1	
SNZ SSNZ 228	140	125	155	250	500	150	50	98	150	205	305	420	M30	2228 -	22228 23228	AN28	AW28	ZF28	ZF35	250x15 250x10	2 1	
SNZ SSNZ 230	150	135	165	270	530	160	60	106	160	220	325	450	M30	2230 -	22230 23230	AN30	AW30	ZF30	ZF37	270x16.5 270x10	2 1	
SNZ SSNZ 232	160	140	175	290	550	160	60	114	170	235	345	470	M30	2232 -	22232 23232	AN32	AW32	ZF32	ZF39	290x17 290x10	2 1	

SN - SSNZ 300 Series



HOUSING NO.	SHAFT DIA.			NORMAL DIMENSIONS (mm)										BOLTS	SELF-ALIGN BALL	SPHERICAL ROLLER	LOCK NUT	LOCK WASHER	ZF SEAL		LOCATING RING	
	d	d1	d2	D H8	B	b	G	F H13	A h13	L	H	E	d1						d2	NUMBER	QTY	
SNZ 305	25	20	30	60	185	52	22	34	50	80	90	150	M12	1305 2305	-	AN05	AW05	ZF5	ZF7	62x8.5 62x10	2 1	
SNZ 306	30	25	35	72	185	52	22	37	50	82	95	150	M12	1306 2306	-	AN06	AW06	ZF6	ZF8	72x9 72x10	2 1	
SNZ 307	35	30	45	80	205	60	25	41	60	90	110	170	M12	1307 2307	-	AN07	AW07	ZF7	ZF10	80x10 80x10	2 1	
SNZ 308	40	35	50	90	205	60	25	43	60	95	115	170	M12	1308 2308	21308 22308	AN08	AW08	ZF8	ZF11	90x10 90x10	2 1	
SNZ SSNZ 309	45	40	55	100	255	70	28	46	70	105	130	210	M16	1309 2309	21309 22309	AN09	AW09	ZF9	ZF12	100x10.5 100x10	2 1	
SNZ SSNZ 310	50	45	60	110	255	70	30	50	70	115	135	210	M16	1310 2310	-	AN10	AW10	ZF10	ZF13	110x11.5 110x10	2 1	
SNZ SSNZ 311	55	50	65	120	275	80	30	53	80	120	150	230	M16	1311 2311	-	AN11	AW11	ZF11	ZF15	120x12 120x10	2 1	
SNZ SSNZ 312	60	55	70	130	280	80	30	56	80	125	155	230	M16	1312 2312	-	AN12	AW12	ZF12	ZF16	130x12.5 130x10	2 1	
SNZ SSNZ 313	65	60	75	140	315	90	32	58	95	130	175	260	M20	1313 2313	-	AN13	AW13	ZF13	ZF17	140x12.5 140x10	2 1	
SNZ SSNZ 314	70	60	80	150	320	90	32	61	95	130	185	262	M20	1314	-	AN13	AW13	ZF13	ZF18	150x13 150x10	2 1	
SNZ SSNZ 315	75	65	85	160	345	100	35	65	100	140	195	290	M20	1315 2315	21315 22315	AN15	AW15	ZF15	ZF19	160x14 160x10	2 1	
SNZ SSNZ 316	80	70	90	170	345	100	35	68	112	145	212	290	M20	1316 2316	21316 22316	AN16	AW16	ZF16	ZF20	170x14.5 170x10	2 1	
SNZ SSNZ 317	85	75	95	180	380	110	40	70	112	155	218	320	M24	1317 2317	21317 22317	AN17	AW17	ZF17	ZF21	180x14.5 180x10	2 1	
SNZ SSNZ 318	90	80	100	190	400	110	33	74	112	160	230	320	M24	1318 2318	21318 22318	AN18	AW18	ZF18	ZF22	190x15.5 190x10	2 1	
SNZ SSNZ 319	95	85	110	200	420	120	36	77	125	170	245	350	M24	1319 2319	21319 22319	AN19	AW19	ZF19	ZF24	200x16 200x10	2 1	
SNZ SSNZ 320	100	90	115	215	420	120	38	83	140	175	280	350	M24	1320 2320	21320 22320	AN20	AW20	ZF20	ZF26	215x18 215x10	2 1	
SNZ SSNZ 322	110	100	125	240	460	130	40	90	150	190	300	390	M24	-	22322	AN22	AW22	ZF22	ZF28	240x20 240x10	2 1	
SNZ SSNZ 324	120	110	135	260	540	160	50	96	160	205	325	450	M30	-	22324	AN24	AW24	ZF24	ZF30	260x10	1	
SNZ SSNZ 326	130	115	150	280	560	160	50	103	170	215	350	470	M30	-	22326	AN26	AW26	ZF26	ZF34	280x10	1	
SNZ SSNZ 328	140	125	160	300	630	170	55	112	180	235	375	520	M30	-	22328	AN28	AW28	ZF28	ZF36	300x10	1	
SNZ SSNZ 330	150	135	170	320	680	180	55	118	190	245	395	560	M30	-	22330	AN30	AW30	ZF30	ZF38	320x10	1	
SNZ SSNZ 332	160	140	180	340	710	190	60	124	200	255	415	580	M36	-	22332	AN32	AW32	ZF32	ZF40	340x10	1	